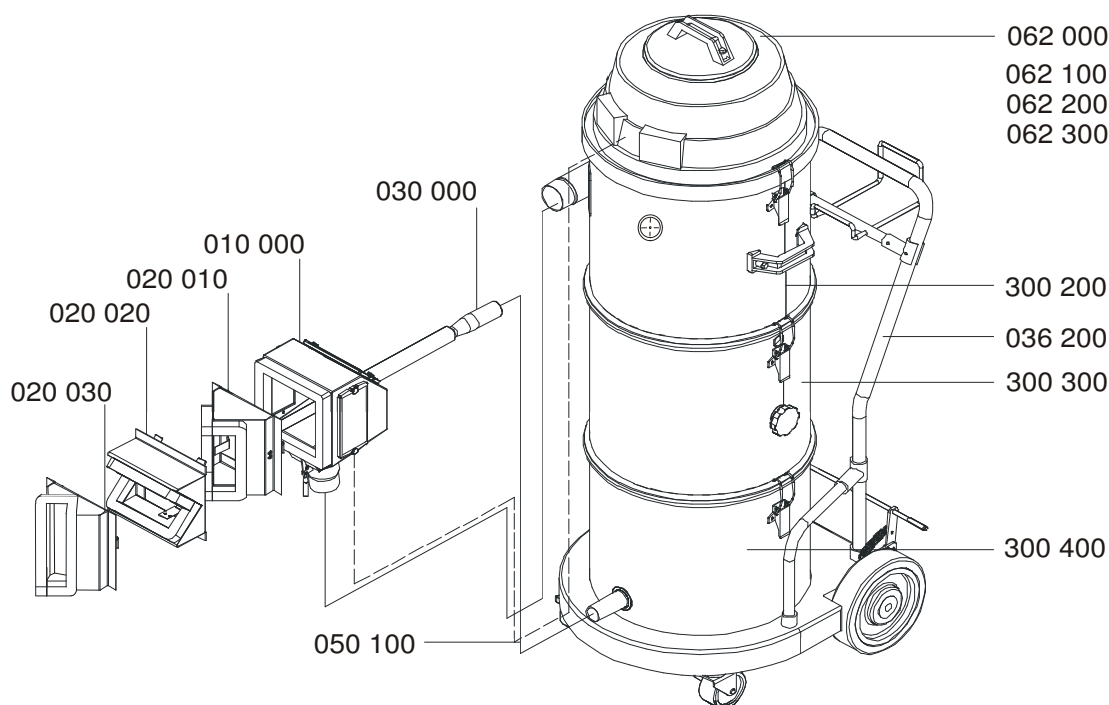


## Tornado ACS 28/15 Price List



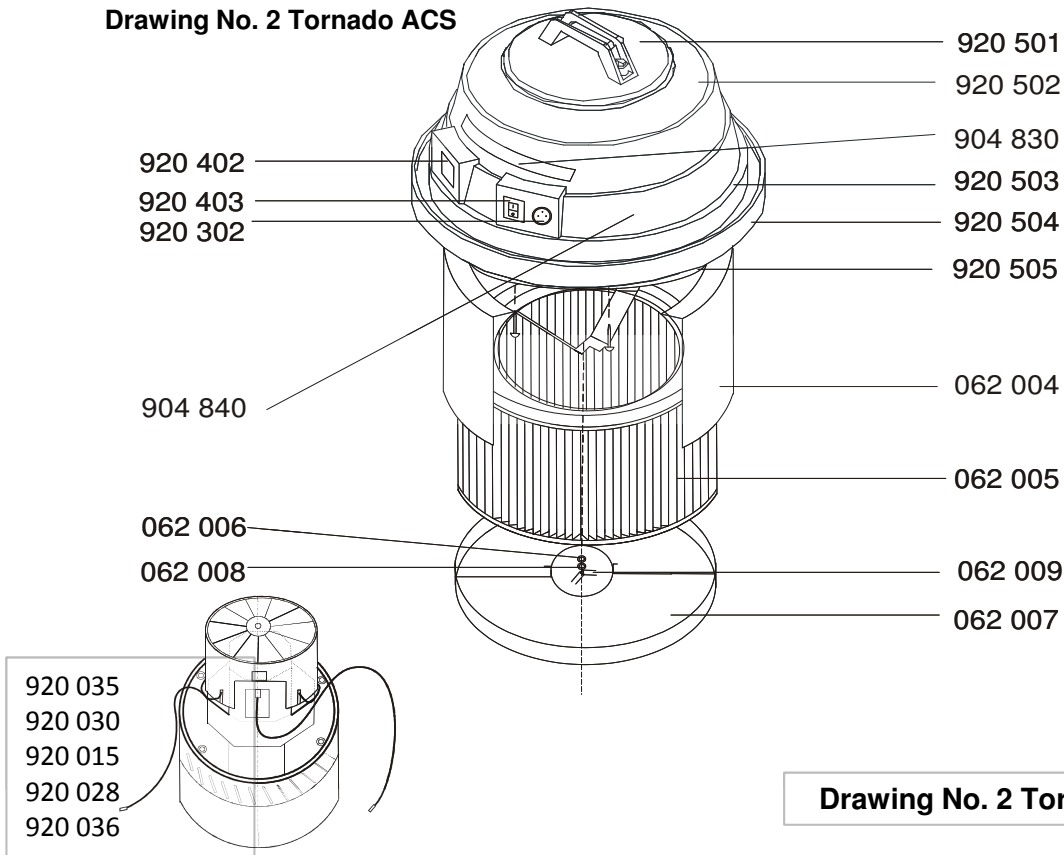
**Drawing No.1 Tornado ACS**

Part Number	Part Name	Qty	Price
010 000	Jet Cover complete with Electrics	1	1488.53
020 010	Adapter AI01 for Internal Angle-Unit complete	1	215.06
020 020	Adapter AA01 for External Angle-Unit complete	1	215.06
020 030	Adapter AK01 for Cross Angle-Unit complete	1	226.19
030 001	Jet Lance complete with Hand Protection SLO1 20116	1	179.84
030 002	Jet Lance complete with Hand Protection SLO2 20114	1	187.25
050 100	Hose Package complete	1	509.85
062 035	Suction Head AC 35 - 230V/ 3.5 kW (with Filter)	1	1928.16
062 030	Suction Head AC 30 - 110V/ 3.0 kW (with Filter)	1	2215.53
062 015	Suction Head AC 15 - 120V/ t6 kW (with Filter)	1	2317.50
062 028	Suction Head AC 28 - 120V/ 2.8 kW (with Filter)	1	2421.32
062 036	Suction Head AC 36 - 250V/ 3.5 kW (with Filter)	1	2169.18
300 200	Upper Container Unit complete with Suction Entry Support	1	716.57
300 300	Middle Container Unit complete with Pneumatic Separation	1	567.32
300 400	Lower Container Unit complete with Dosing Device	1	978.91
036 200	Trolley complete	1	1231.06

Part Number	Part Name	Qty	Price
036 201	Trolley without Wheels powder surface cover (Blue RAL5017)	1	1104.91
036 202	Plastic Wheel, with Elastic-Rubber Tires	1	17.51
036 203	Distanzhulse 20 / 13 x 61	1	6.18
036 204	Lenticular-Head Inbus Screws M12 (2 off)	1	10.30
036 206	U - Washer M12,8 mm (2 off)	1	3.09

## Tornado ACS 28/15 Price List

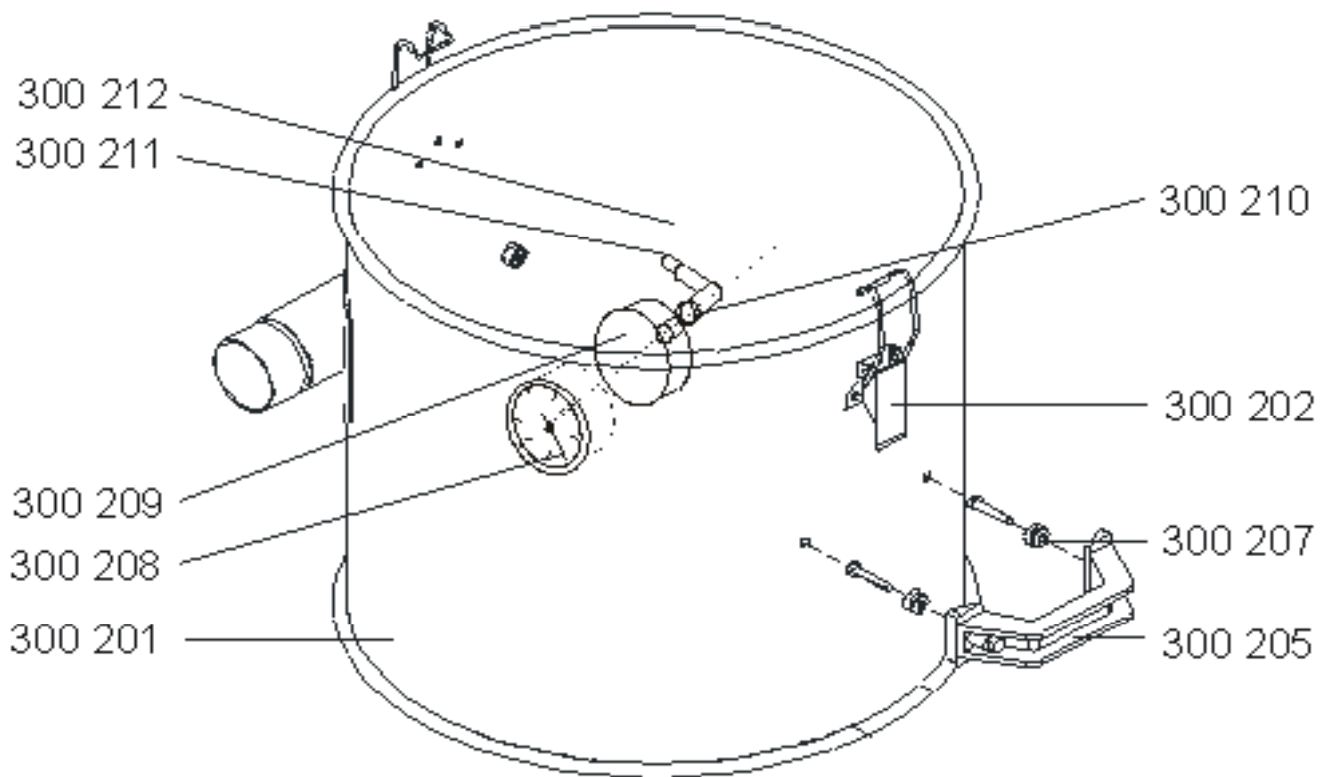
**Drawing No. 2 Tornado ACS**



**Drawing No. 2 Tornado ACS**

Part Number	Part Name	Qty	Price
920 501	Cover Plate with Handle (Blue)	1	46.35
920 502	Upper Cover (Blue)	1	63.04
920 503	Middle Fixing Plate (Black)	1	42.64
920 504	Lower Cover (Blue)	2	81.58
920 505	Lower Cover Plate (Black) old version	0	0.00
920 506	Sandwich rubber ring	1	157.59
920 302	Neutrix Built-in Electric Plug Socket	1	18.54
920 309	Netcable with plug	1	29.66
920 402	Electrical Rocker-Activated (Dolly) Switch	1	12.98
920 403	PVC Cover for Rocker-Activated Switch	1	5.56
920 405	Transformer 12v120W	1	70.45
904 830	Attached Nameplate "Motor ... .1"	1	2.78
904 840	Attached Nameplate "Filter-position "	1	4.64
062 004	Filter Protection Tube complete with Fixing Material	1	129.78
062 005	Polyester Filter Cartridge 290/180-100.28	1	211.15
062 005_H	Hepa Filter Cartridge	1	396.55
062 006	Rubber Seal for Filter	1	1.67
062 007	Discharge Collection Cover	1	81.58
062 008	U- Washer	1	0.28
062 009	Wing-nut	1	4.64
920 035	Forced Air Motor 230 V/ 1400 W 50160 Hz + Earth	1	241.02
920 030	Forced Air Motor 110 V/ 1000 W 50160 Hz + Earth	1	315.18
920 015	Forced Air Motor 120 V/ 800 W 50160 Hz + Earth	1	333.72
920 028	Forced Air Motor 120 V/ 1000 W 50160 Hz + Earth	1	361.53
920 036	Forced Air Motor 250 V/ 1200 W 50160 Hz + Earth	1	342.99

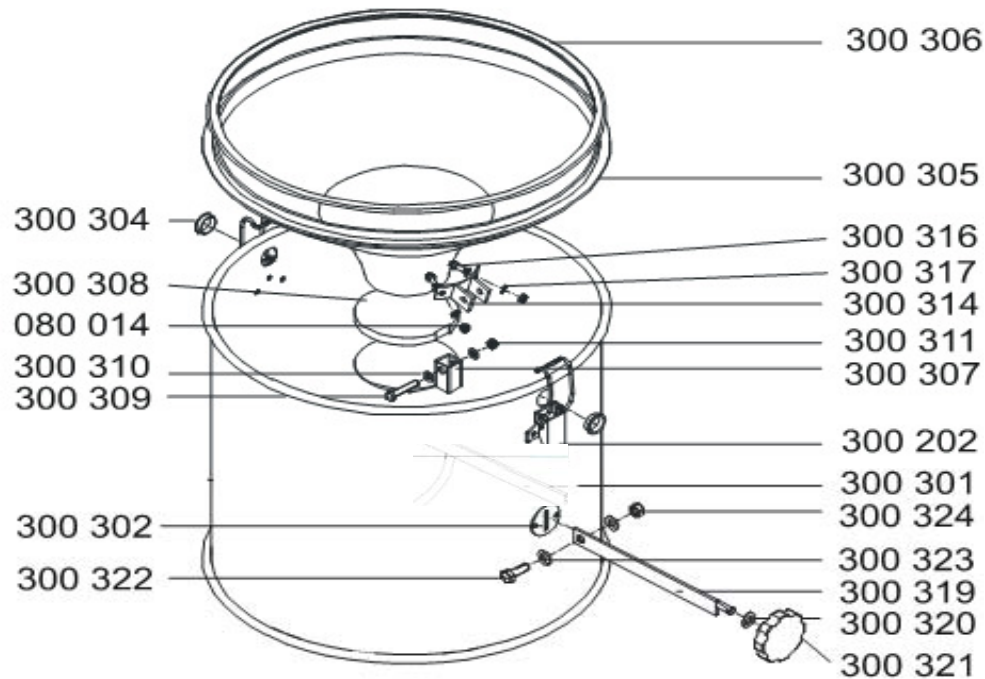
## Tornado ACS 28/15 Price List



**Drawing No. 3 Tornado ACS**

Part Number	Part Name	Qty	Price
300 201	Stainless Steel Cladding with Suction Entry Support	1	315.18
300 202	Cover Clamp with Clip	2	16.69
300 205	Black Plastic Handle	2	16.69
300 206	Lenticular-Headed Screw 4.8 x 19 mm	4	1.48
300 207	Screw Anchor Plate (Rosette)	4	2.22
300 208	Manometer	1	155.74
300 209	Manometer Cover Cap	1	61.18
300 210	Sealing Washer	1	1.85
300 211	1/4" Bronze Bend with Seal	1	4.64
300 212	1/4" Filter Cartridge	1	25.96

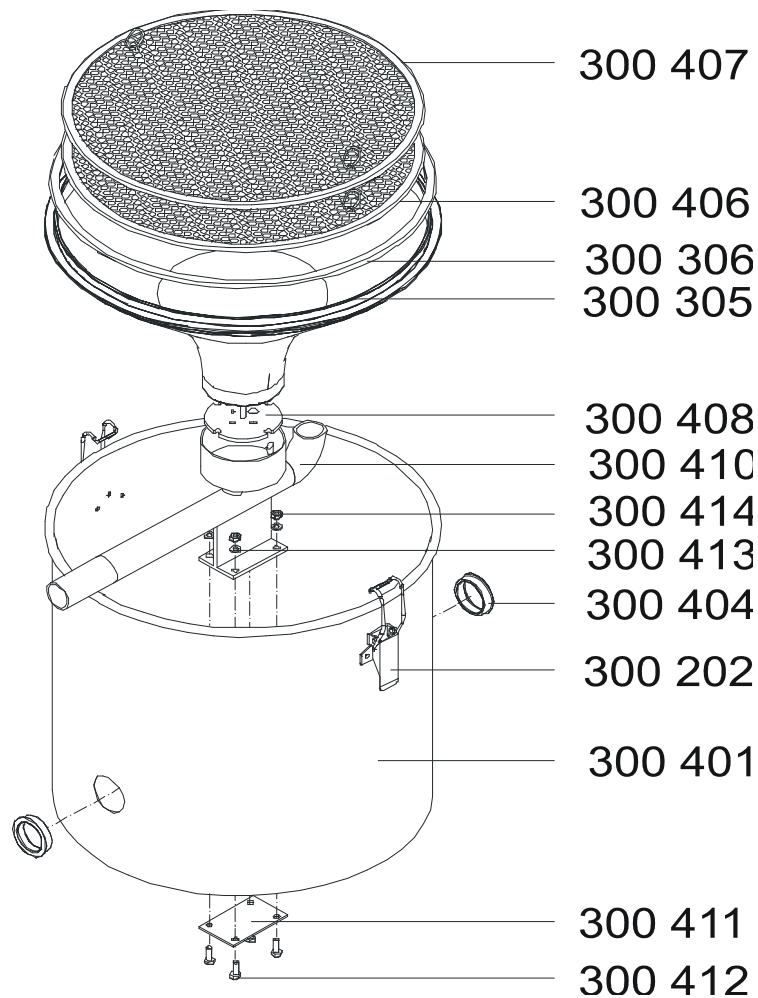
## Tornado ACS 28/15 Price List



**Drawing No. 4 Tornado ACS**

Part Number	Part Name	Qty	Price
300 301	Stainless Steel Cladding	1	203.94
300 202	Cover Clamps Main Body Clamp-Clip	4	16.69
300 302	Opening and Pressure Plate	1	12.98
300 304	Plastic Through-Passage Piece d = 17.5/22,2	1	0.93
300 305	Black Plastic Funnel	1	31.52
300 306	Rubber Seal for Funnel	1	11.12
300 307	Stainless Steel Flap	1	83.43
300 308	Rubber Seal D = 105 x 10 mm	1	7.42
300 309	Hexagon-Headed Bolt M8 x 35 mm	1	0.37
300 310	Stainless Steel U-Washer, B8.4	1	0.46
300 311	Hexagon Self-Locking Nut M8	1	0.93
300 314	Stainless Steel Connection Bend	1	68.60
300 316	Hexagon-Headed Bolt M5 x 10 (2 No.)	1	2.60
300 317	U-Washer, B5.3 (2 No.)	1	0.37
300 318	Hexagon Self-Locking Nut M5	1	2.22
300 319	Tension-rod with Threaded Bolts	1	42.64
300 320	Stainless Steel U-Washer, B8.4	1	0.19
300 321	Star-Shaped Grip - Blue/ M8	1	7.42
300 322	Hexagon-Headed Bolt M8 x 20 mm	1	0.19
300 323	Stainless Steel U-Washer, B 8.8	1	0.19
300 324	Hexagon Self-Locking Nut M8	1	0.19

## Tornado ACS 28/15 Price List

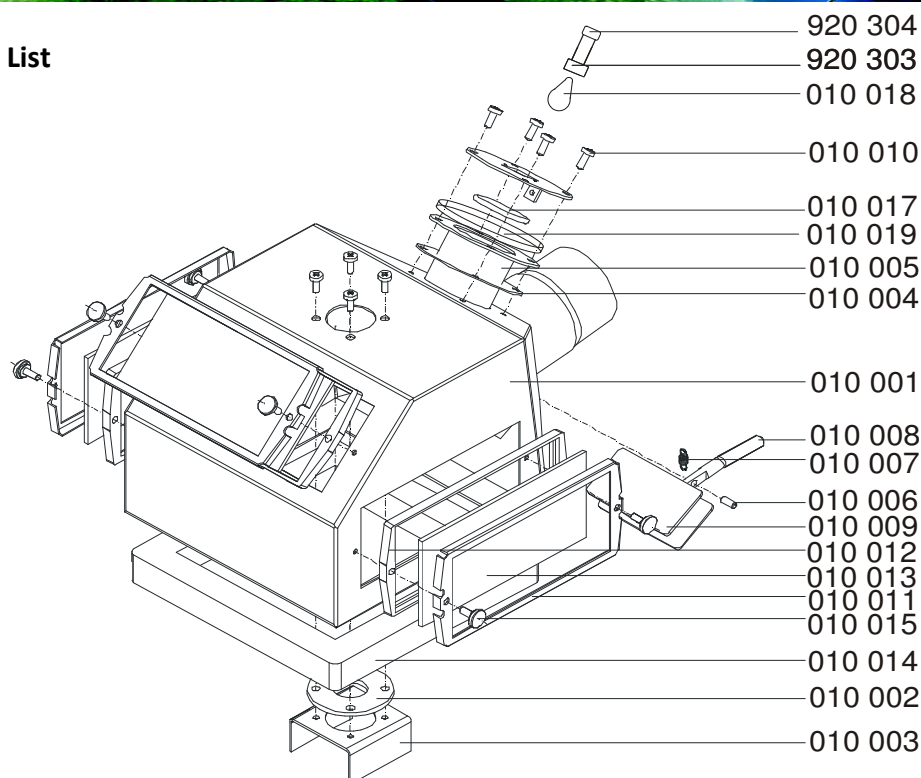


**Drawing No. 5 Tornado ACS**

Part Number	Part Name	Qty	Price
300 401	Stainless Steel Cladding	1	315.18
300 404	Plastic Through-Passage Piece	2	1.30
300 202	Cover Clamps Main Body Clamp-Clip	2	16.69
300 305	Black Plastic Funnel	1	33.37
300 306	Rubber Seal for Funnel	1	11.12
300 406	Sieve complete 3 mm	1	88.99
300 407	Sieve complete 6 mm	1	88.99
300 408	Dosing Adjustment - 6 Step	1	98.26
300 410	Dosing Installation	1	220.63
300 411	Fixing Plate	1	29.66
300 412	Hexagon-Headed Bolt M6 x 16 mm (4 off)	2	2.22
300 413	Spring Washers A6 (4 off)	2	1.11
300 414	Hexagon Nut M6 (4 off)	2	1.85
300 416	Hexagon-Headed Bolt M8 x 40 mm (4 off)	2	3.15
300 418	U-Washer, B8.4 (4 No.)	2	0.56
300 420	Hexagon Self-Locking Nut M8 (4 off)	2	1.85



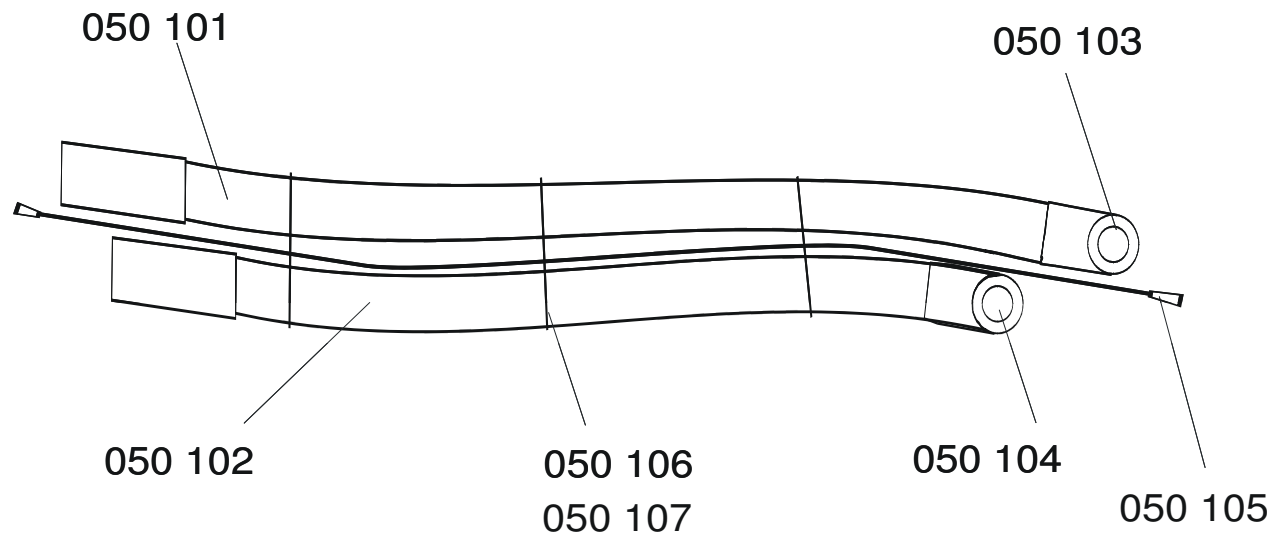
## Tornado ACS 28/15 Price List



**Drawing No. 6 Tornado ACS**

Part Number	Part Name	Qty	Price
010 001	Stainless Steel Hood Body	1	630.36
010 002	Antistatic Rubber Lance Seal	1	11.12
010 003	Stainless Steel Impact Plate	1	22.25
010 030	Lenticular-Headed Screw M4 x 10 (4 off)	4	3.15
010 005	Lighting Flange	1	44.50
010 004	Rubber Seal for Lighting Flange, 69 x 0.5 mm	1	1.85
010 010	Lenticular-Headed Screw M4 x 20A2 (4 off) x 19 mm	4	2.78
010 017	O-Ring for Lighting Flange	1	1.48
010 018	Halogene Lighting Unit D = 35 mm 12V/20W GU 4.3	1	7.42
010 019	Rubber Distance Ring 69 x 10 mm	1	12.98
010 032	Stainless Steel Cover Plate 70 x 1.5 mm	1	27.81
920 303	Ceramic Plug-in Socket G 4.3	1	12.98
920 304	Neutrix Built-in Electric Plug Socket	1	14.83
010 036	Lenticular-Headed Bolt M3 x 6A2 (2 off)	2	0.74
010 038	Nut M3 (2 off)	2	0.74
010 006	Stainless Steel Tension Pin	1	3.15
010 007	Stainless Steel Tension Spring	1	7.42
010 008	Stainless Steel Air Damper without Seal	1	48.20
010 009	Flat Seal for Air Damper 40 x 20 x 4 mm	1	11.12
010 011	Stainless Steel Window Frame - Pressed Piece (3 off)	1	24.10
010 012	Profiled Rubber Seal for Window (3 off)	1	25.96
010 013	Glass Window Pane (3 off)	15	53.77
010 015	Stainless Steel Knurled Screw M4 x 10 mm	6	11.12
010 016	Plastic Washer U4.2 with Lug (for Knurled Screw)	0	0.00
010 014	Sponge-Rubber Bottom Seal for Hood 660 x 20 x 20 mm	1	35.23
01 2012	Large Jet Hood (Complete Set) 260 mm x 230 mm	1	1950.00
02 2012	Large Jet Hood Sponge Rubber Bottom Seal 260 mm x 230 mm	1	45.23

## Tornado ACS 28/15 Price List



**Drawing No. 7 Tornado ACS**

Part Number	Part Name	Qty	Price
050 101	Black Suction Hose d=50 (Length 4.000 mm)	0	122.36
050 102	Black Suction Hose d=32 (Length 4.500 mm)	0	94.55
050 103	Black Plastic Twisting Socket for Hose d = 55	1	24.10
050 108	Black Plastic Twisting Socket for Hose d = 55, el	1	44.50
050 104	Black Plastic Hose Socket d = 32 el	1	22.25
050 105	Electric Cable 4,8 m complete HO5RN-F 3G1	1	81.58
050 106	Cable Binder 4.75 x 373 mm	5	2.78
050 107	Cable Binder 7.62 x 368 mm	5	4.64

Special Granulate	2.5 Gallon Pail	Qty	Price
200 018	Nutshell natural jet medium NS 450	1	95.95
200 022	Jet glass, white glass SG 150	1	95.95
200 023	Jet glass, white glass AG 300	1	95.95
200 040	Asilit, aluminum silicate AS 90	1	95.95
200 041	Asilit, aluminum silicate AS 250	1	95.95
200 042	Asilit, aluminum silicate AS 500	1	95.95
200 002	Jet plast, plastic granulate DP 200 A	1	95.95
200 003	Jet plast, plastic granulate DP 600 A	1	95.95

